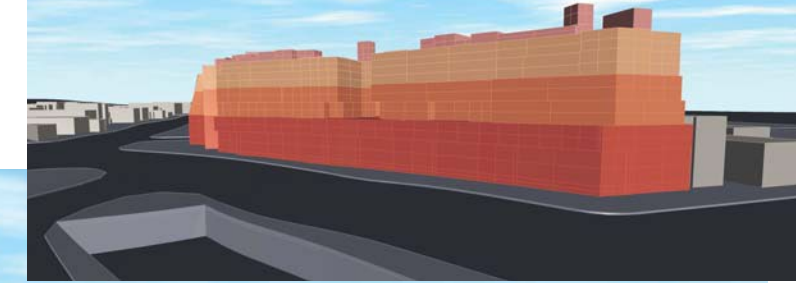


WHAT DO YOU THINK ABOUT THE PROPOSED CONDO PROJECT

at Figueroa Street & Pasadena Avenue?

AND WHAT DO YOU THINK ABOUT THESE ALTERNATE DESIGNS?

Developer's Proposed Design at Pasadena & Ave. 38



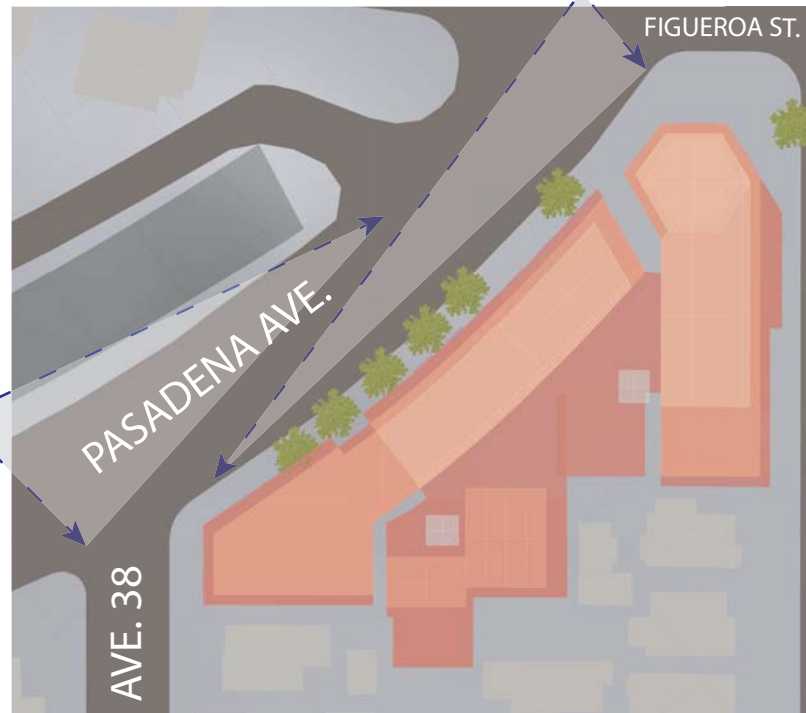
MASSING MODEL - ALTERNATIVE 2A



A VIEW TO SOUTH - CORNER OF FIGUEROA & PASADENA

B VIEW TO NORTH - CORNER OF PASADENA & AVE. 38

A VIEW



GROUND FLOOR PLAN

B VIEW



BIRD'S EYE VIEW TO EAST

- 1) WHAT IS PROPOSED FOR THE SITE?
A developer has proposed a 100-unit condo, but the community has voiced strong opposition to the project;
- 2) WHAT ARE THESE MASSING MODELS?
These massing models are an alternative way to shape the building and place it on the site (like Lego blocks)- THIS IS NOT A FINAL DESIGN OR STYLE OF A BUILDING.
- 3) WHO?
These massing models came out of a workshop held on 12/19/2020 by volunteer architects & planners.

FOR MORE INFO AND TO SUBMIT YOUR COMMENTS PLEASE VISIT THESE WEBSITES:

www.asnc.us

www.arroyosecoaliance.com

