

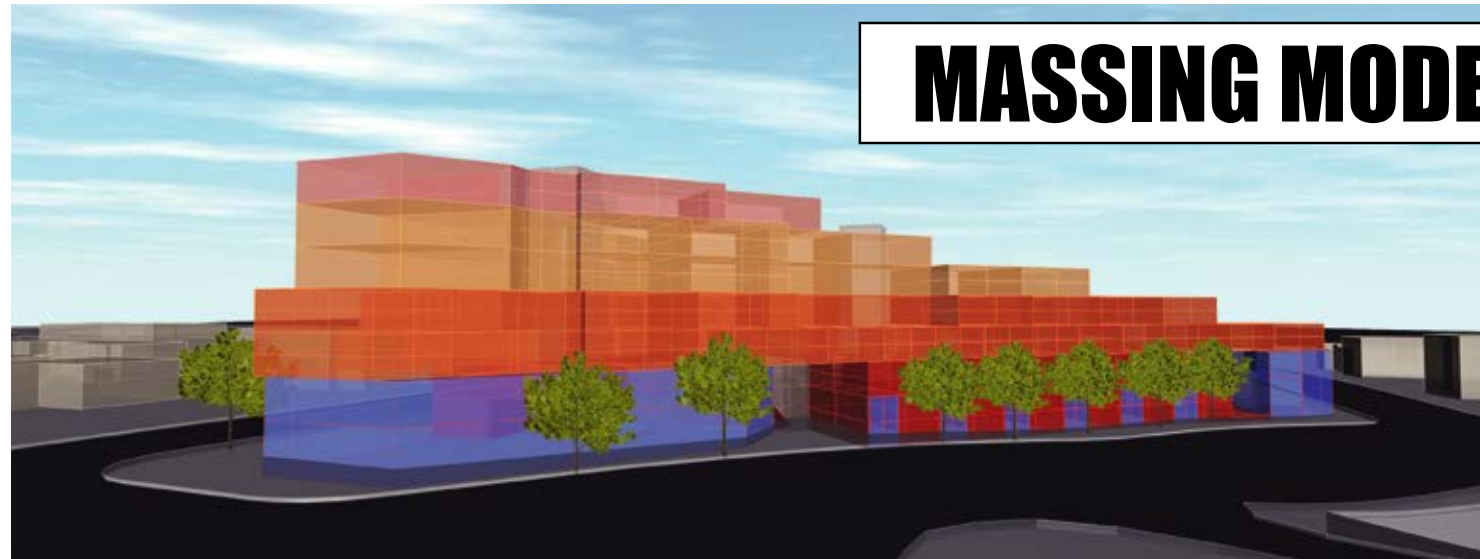
# WHAT DO YOU THINK ABOUT THE PROPOSED CONDO PROJECT

at Figueroa Street & Pasadena Avenue?

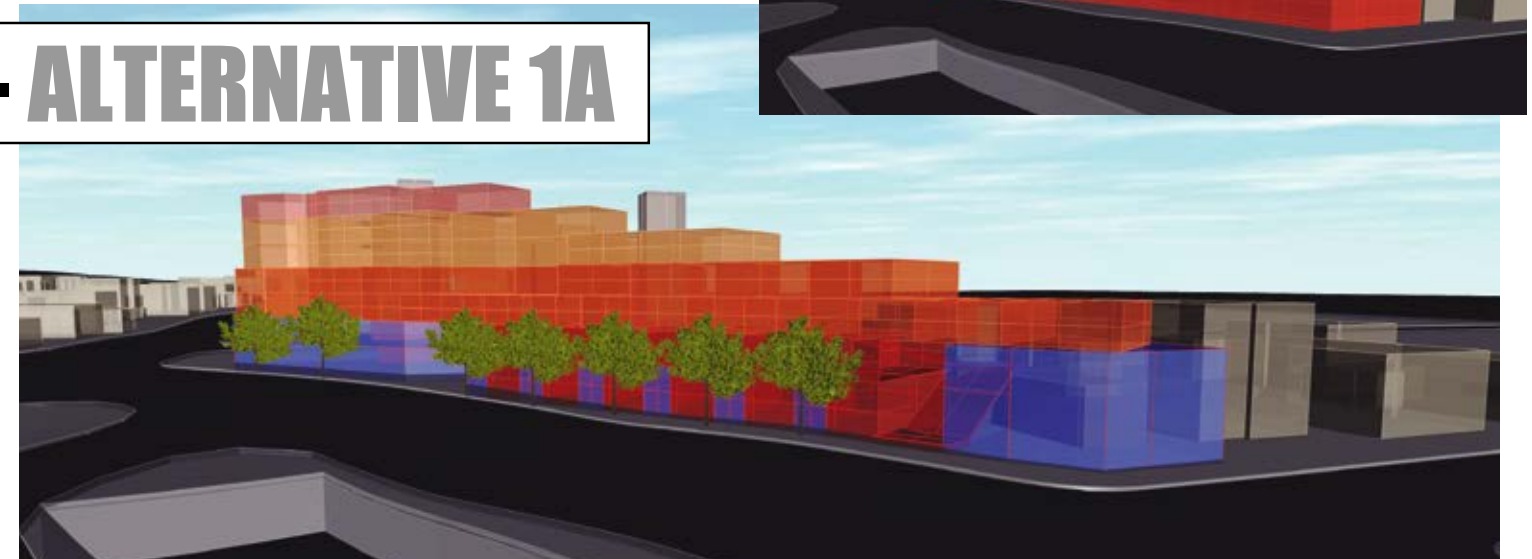
AND WHAT DO YOU THINK ABOUT THESE ALTERNATE DESIGNS?



## MASSING MODEL - ALTERNATIVE 1A



**A** VIEW TO SOUTH - CORNER OF FIGUEROA & PASADENA



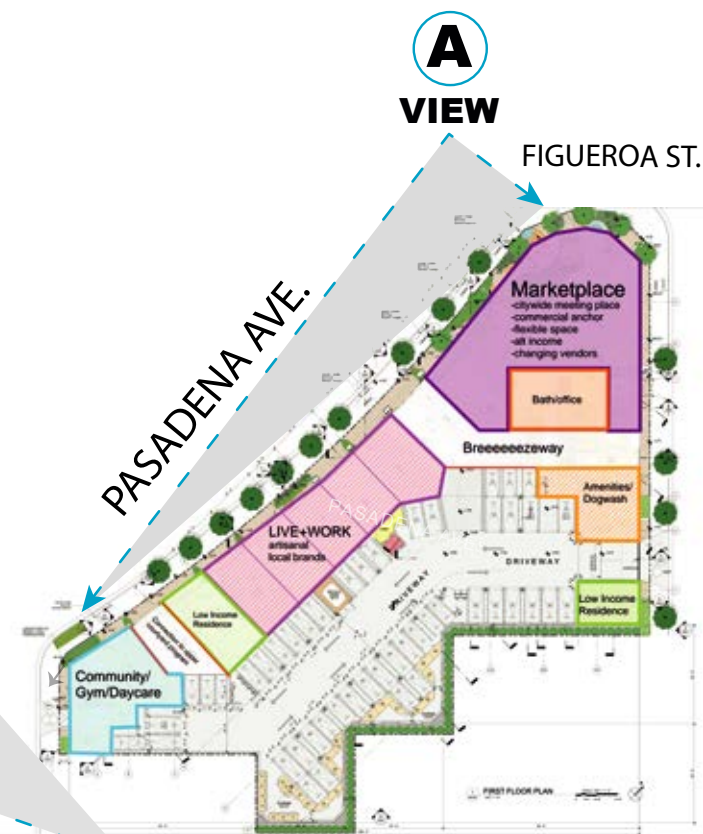
**B** VIEW TO NORTH - CORNER OF PASADENA & AVE. 38

- 1) WHAT IS PROPOSED FOR THE SITE?  
A developer has proposed a 100-unit condo, but the community has voiced strong opposition to the project;
- 2) WHAT ARE THESE MASSING MODELS?  
These massing models are an alternative way to shape the building and place it on the site (like Lego blocks)- THIS IS NOT A FINAL DESIGN OR STYLE OF A BUILDING.
- 3) WHO?  
These massing models came out of a workshop held on 12/19/2020 by volunteer architects & planners.

FOR MORE INFO AND TO SUBMIT YOUR COMMENTS PLEASE VISIT THESE WEBSITES:

[www.asnc.us](http://www.asnc.us)

[www.arroyosecoalliance.com](http://www.arroyosecoalliance.com)



GROUND FLOOR PLAN



BIRD'S EYE VIEW TO EAST

**B** VIEW

